

Use of the results of FIS/FFM training – Present status and future plan

Paulus M. Shikongo
Directorate of Forestry
Ministry of Agriculture, Water and Forestry
Namibia



Directorate of Forestry
Ministry of Agriculture, Water and Forestry

EWG-FIS/FFM meeting | Kasane, Botswana | 24-27 Feb. 2020

Use of results of FIS training

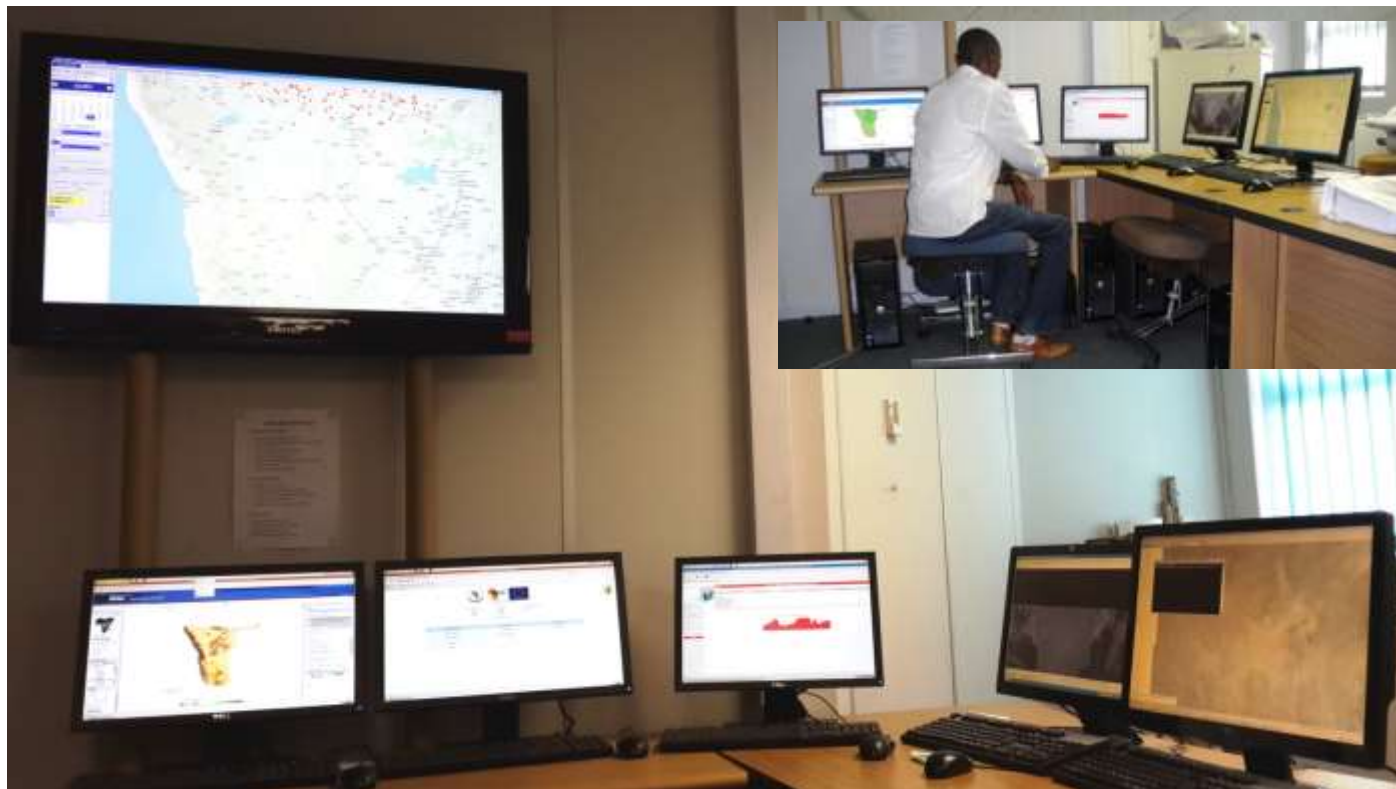
Present status

- Explored Forest Distribution Map (FDM) 2015 as base map for Namibia
- Pre- classification for Landsat 8 Mosaic images at National level
- Started with field validation and covered 6 region out of 14 (using tablet pc, ODK form)
- Introduced colleagues to GEE plat form

Future plan for FIS

- ❖ Explore GEE (more advanced training)
- ❖ Produce the Forest Distribution Map as baseline base
- ❖ Generate Forest Change (Gain and Loss)
- ❖ Feed RFIS with annual data
- ❖ Conduct National Forest Inventory

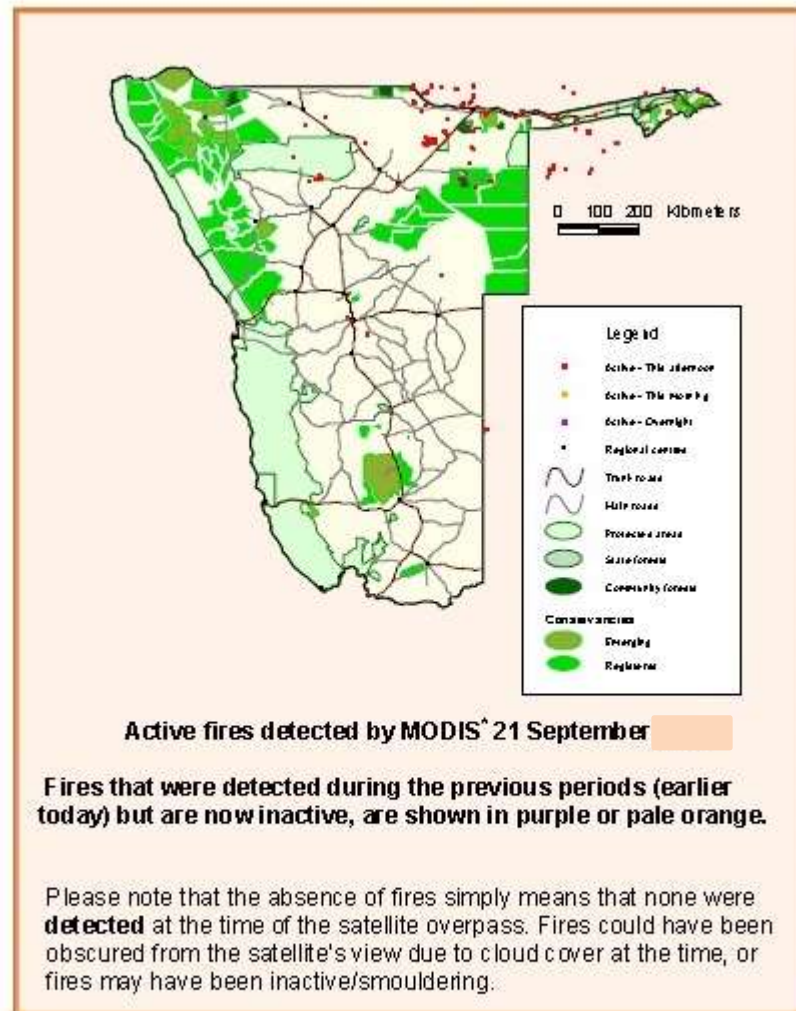
Advanced Fire Information System





Daily active fire bulletin report

Country overview



MODIS - Moderate Resolution Imaging Spectroradiometer, flown on NASA's Aqua and Terra satellites

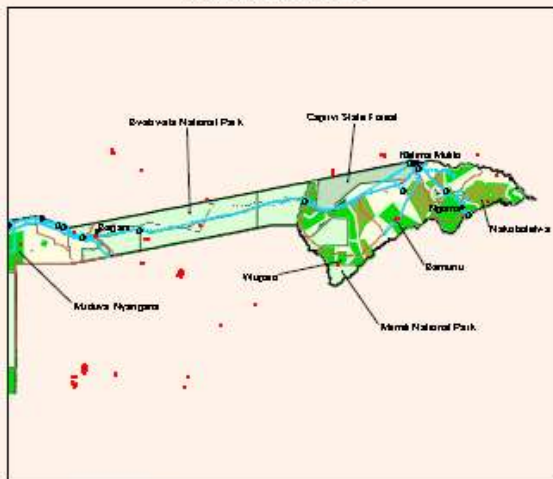


Mapas temáticos elaborados por o Centro Nacional de Informação Geográfica de Moçambique.
AMESD (Área de Monitorização do Ambiente e do Desenvolvimento Sustentável) é financiado pelo Espaço Europeu.
Os conteúdos de responsabilidade científica do AMESD são da exclusiva responsabilidade dos autores, não refletindo a posição do Espaço Europeu.
Serviços e conteúdos disponíveis em: www.informacao.gov.mz, info@ines.gov.mz





Active fire detail view G



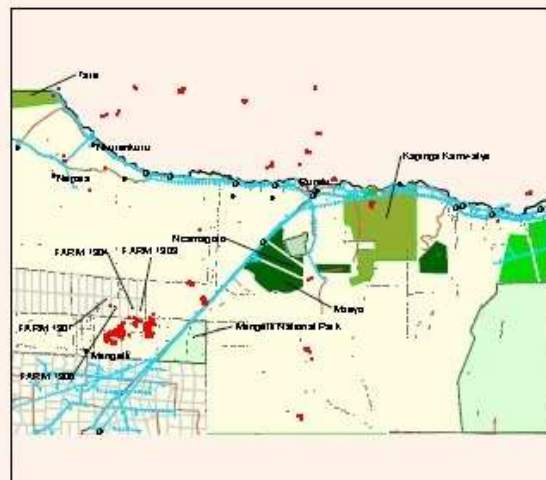
0 40 80 Kilometers



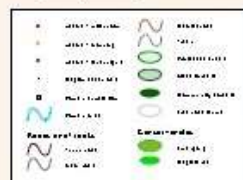
AMESD is a joint venture between the AMESD of the Department of Forestry, Fisheries and the Environment and the CSIR.



Active fire detail view E



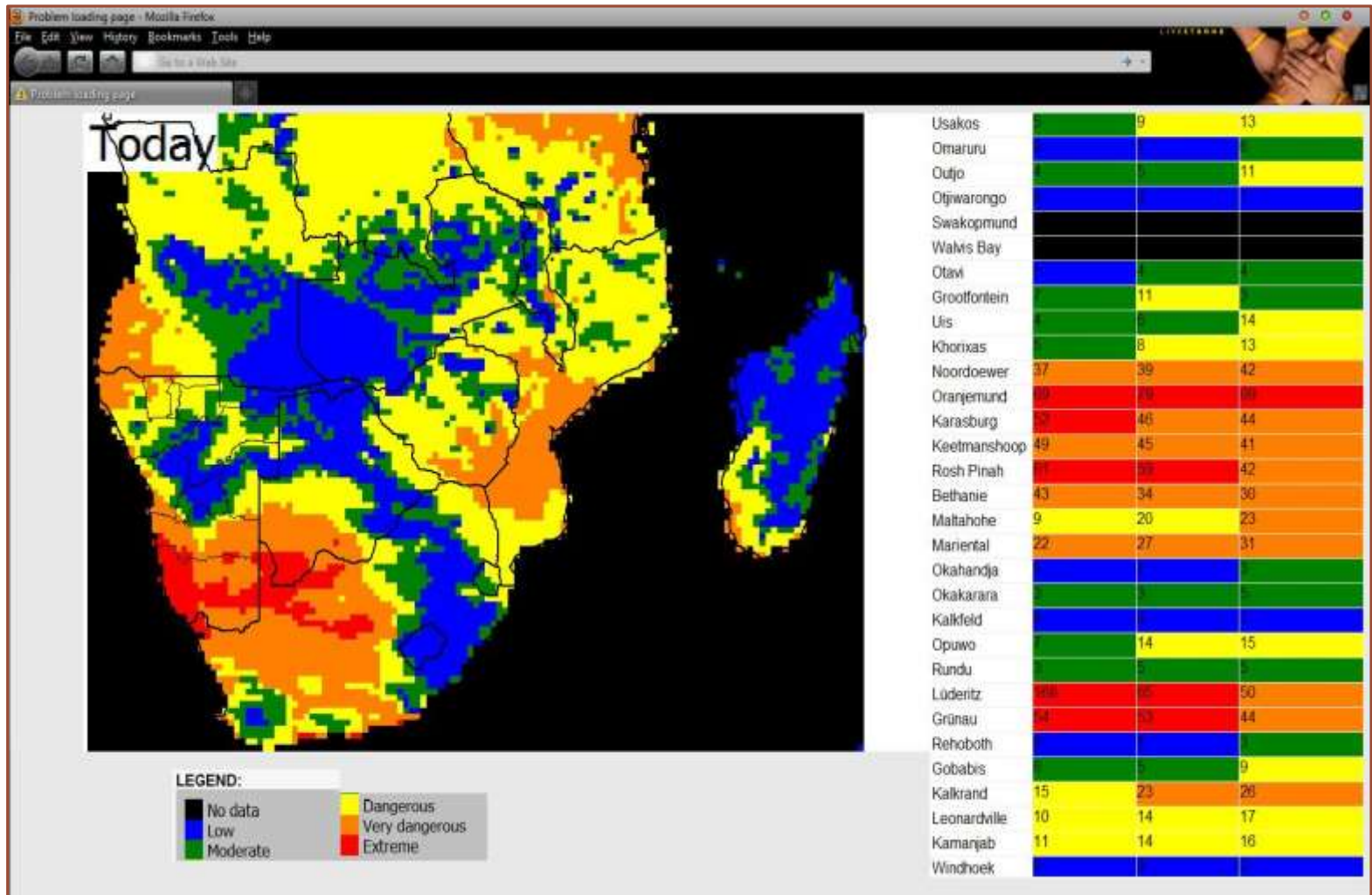
0 40 80 Kilometers



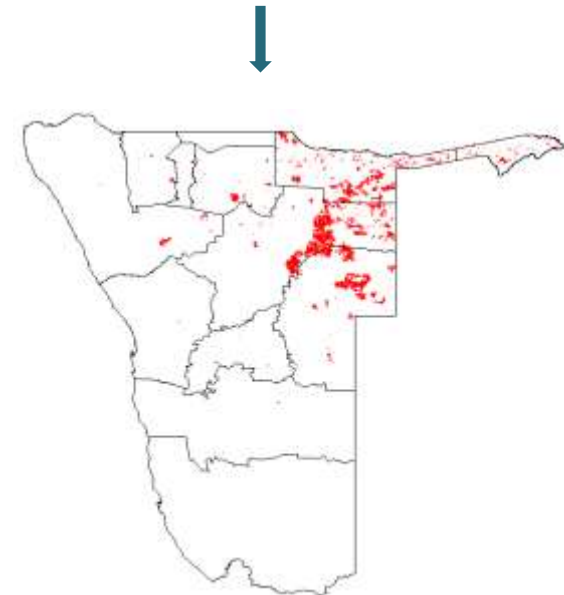
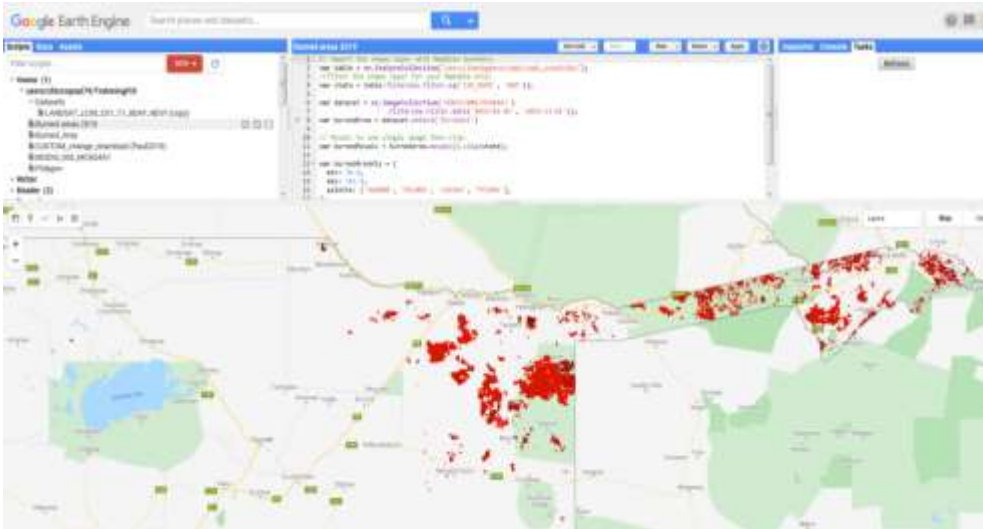
AMESD is a joint venture between the AMESD of the Department of Forestry, Fisheries and the Environment and the CSIR.



Fire Danger forecast map and table



Monthly Burned Area Mapping



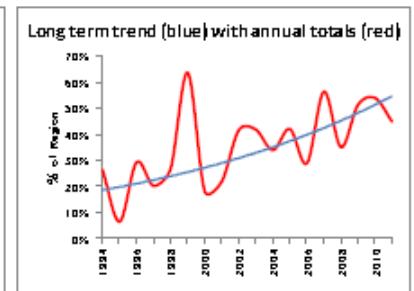
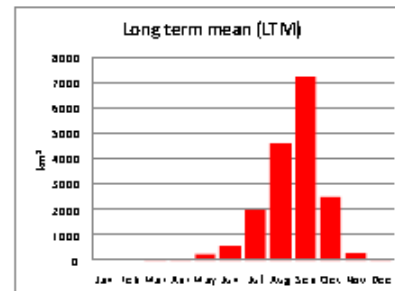
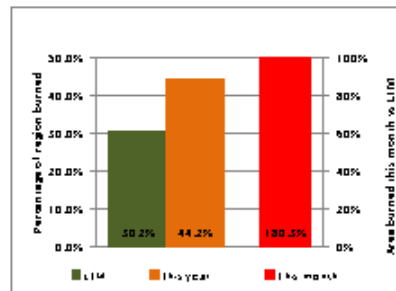
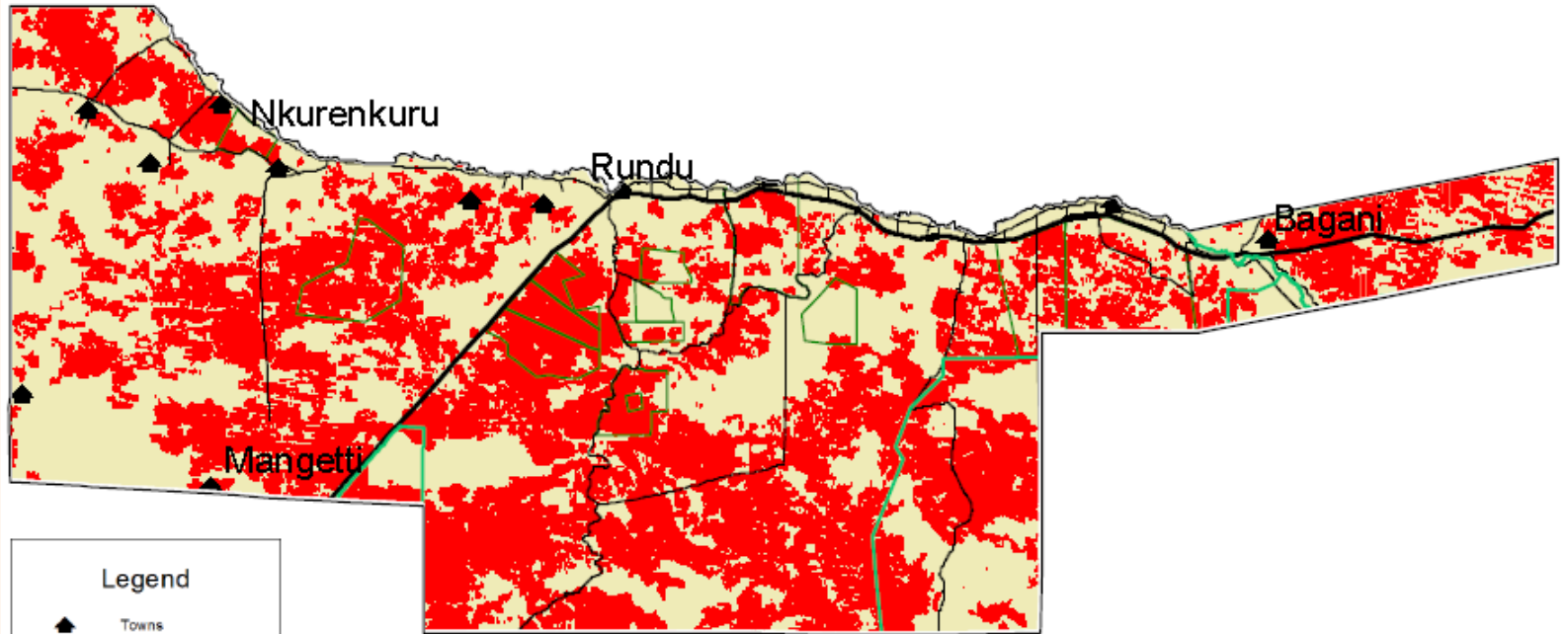
Burned Areas per month
(Shapefile)

Monthly Burned Area Report

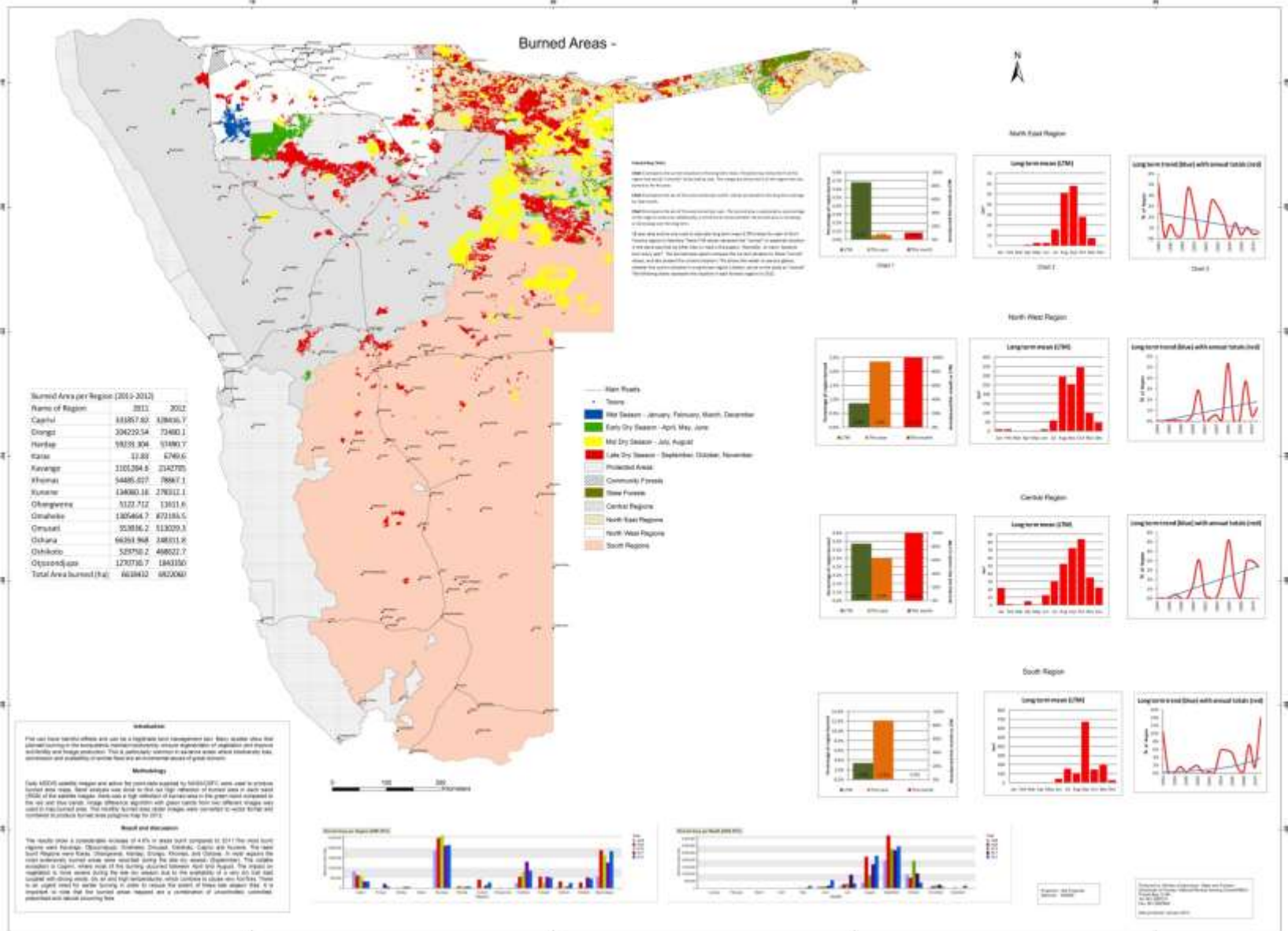
BURNED AREA – KAVANGO REGION
1 JANUARY TO 31 SEPTEMBER

Burned area to date: 21405 km²
 Burned area this month: 13048 km²

Mapped by the NRSC from satellite images received on the AMESD system.
 Queries and comments to Dr Johan le Roux: jllrx@gmail.com



Annual Burned Areas Report

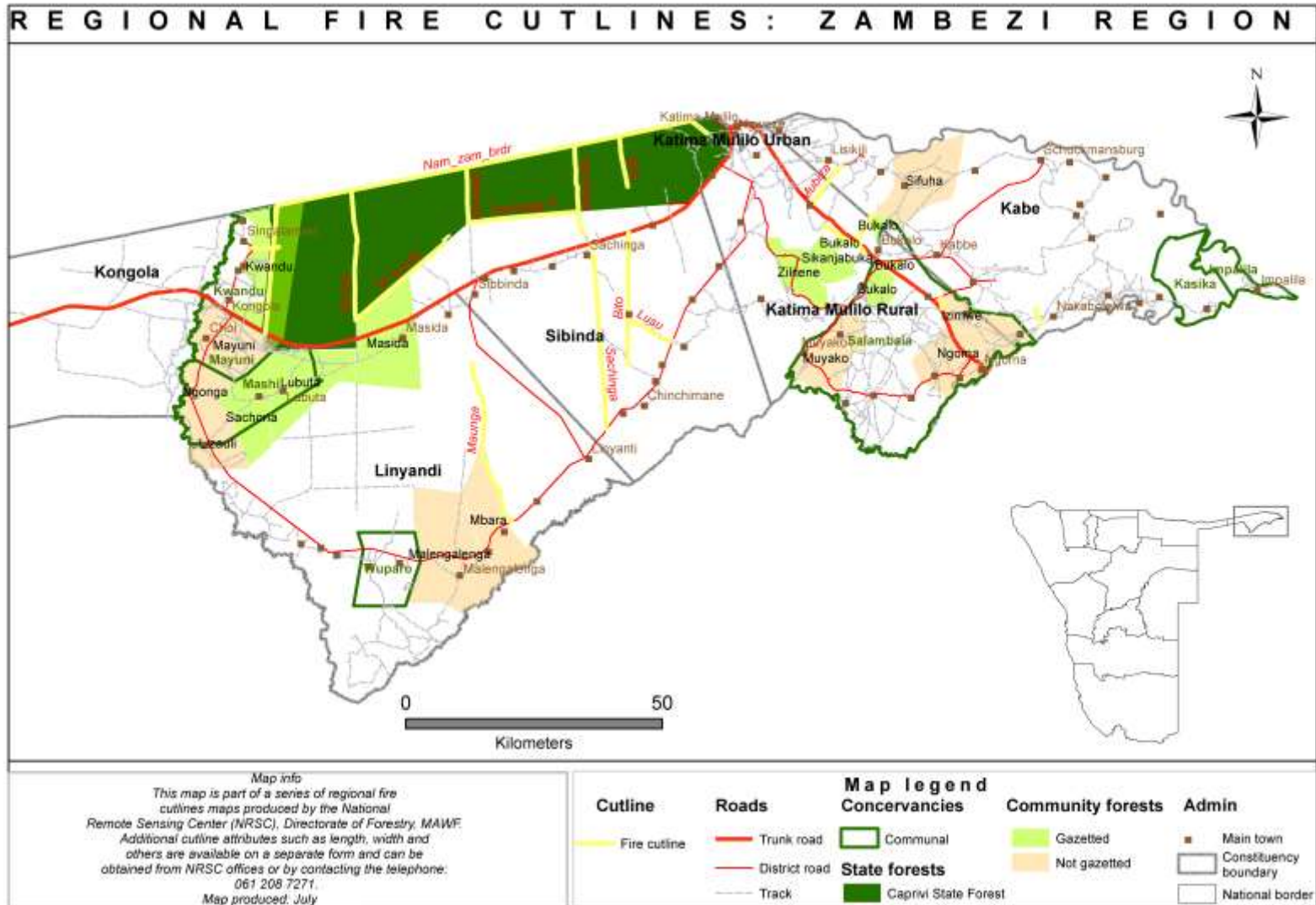


Clients/Users

- MAWF
- Line Ministry
- Farmers
- Municipalities
- Media
- Nampower



Fire breaks



THANK YOU

