



Use of skills acquired from FIS & FMM trainings.

Present status and future Plan

Shani K.Kiluvia- FO (Resources Assessment Unit)
Kekilia Kabalimu- PC (Resource Assessment Unit)
Tanzania Forest Services Agency
Ministry of Natural Resources and Tourism

27th February, 2020
Kasane, Botswana



SADC-JICA Forestry Project

- One of the expected output of the project was to enhance capacity of SADC Member States to improve **Forest Information System and Forest Fire Management**
- Being a member of FIS-EWG, we were able to attend several trainings including:
 - **Basic FIS training**
 - Basics of QGIS
 - Creating a map layout in QGIS
 - Forest management system basics
 - Simple analytics
 - Forest fire management system basics



➤ **Advanced FIS training**

- Database (**PostgreSQL**)
- Field data Collection with tablet PC
- QGIS Python
- QGIS plugins
- GEE (Google Earth Engine)
- System designing
- RFIS System Design



➤ **RFIS training**

- Where the main objective was to understand the mechanism of the RFIS, what has been done and what FIS-EWG can do and how to implement the task of Reporting State of Forests at National level as well as customization of NFIS.

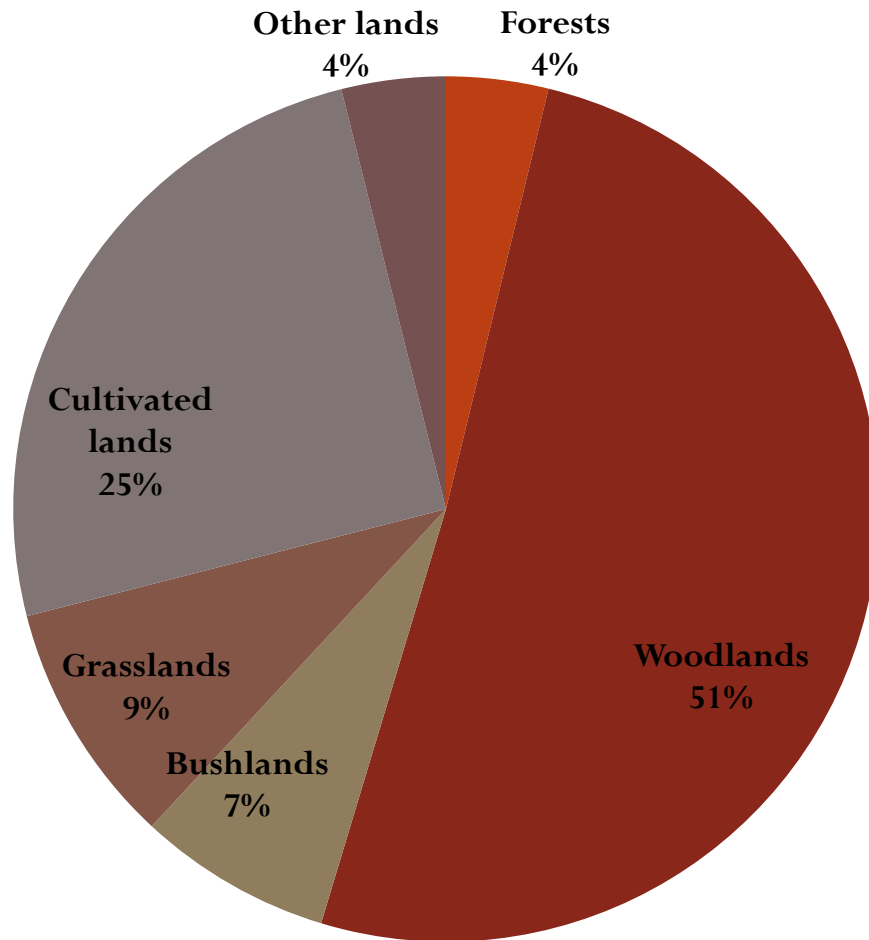


How the acquired skills from the project are utilized in the country?

Forest Information System present Status:

- Tanzania mainland conducted its first National Forest Resources Monitoring and Assessment (NAFORMA) over the period of 2009 to 2014.
- The aim was to develop complete and sound baseline information on forest and tree resources
- Two types of results were generated

NAFORMA inventory results



- Tanzania Mainland has a land area of about 88 million ha.
- 48.1m ha. (55%) is covered by forest and woodland.
- Woodlands occupy 44.7 million ha or 93% of the total forest area.
- The remaining 7% is made up of Humid, Coastal, Mangrove and Plantation forests.

NAFORMA Land use Land cover map

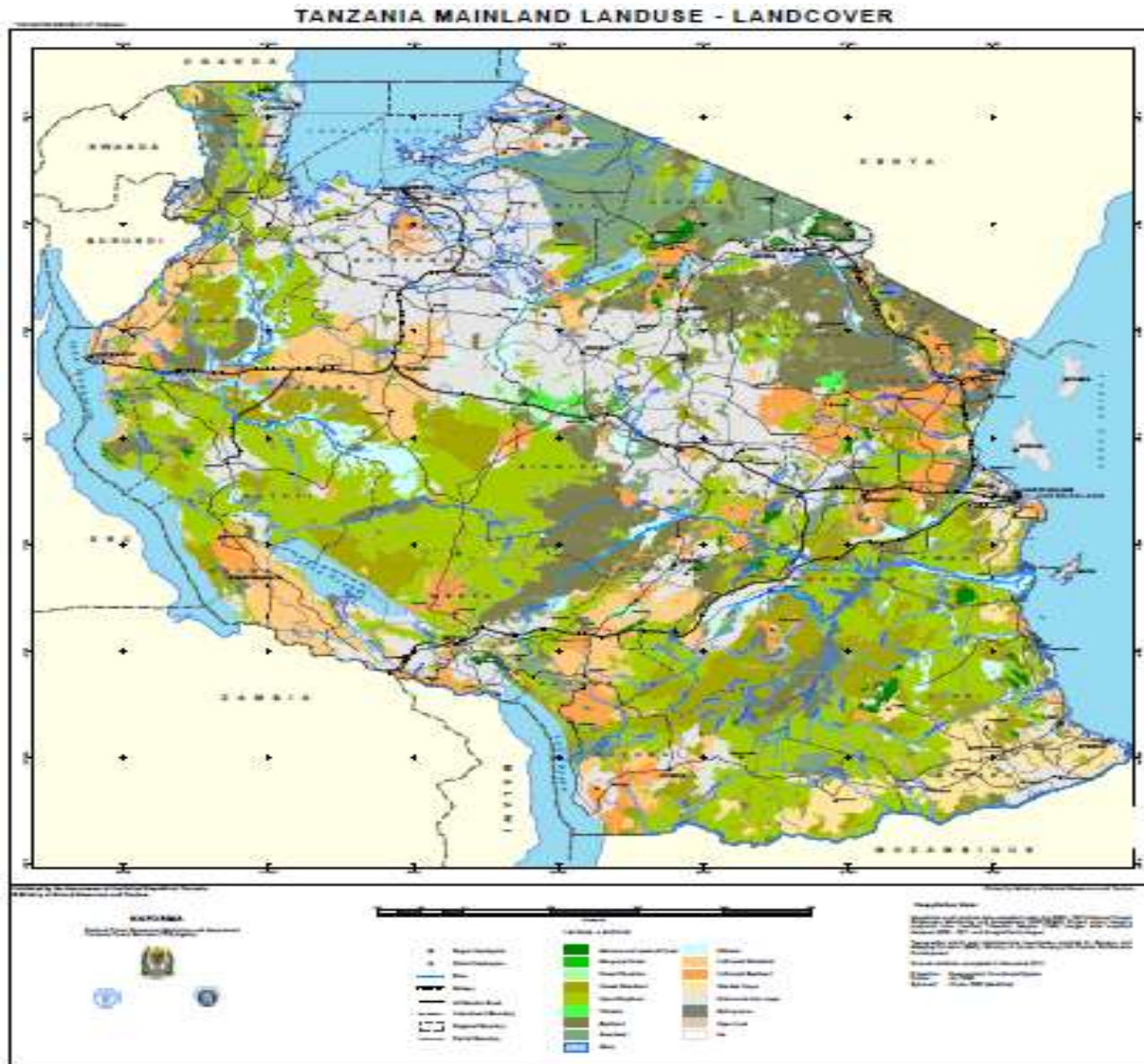


Table 4.14: Coverage of LULC Map classes in Tanzania in 2010.

No.	LULC Class	NAFORMA LULC area (ha)	NAFORMA LULC calibrated area (ha) ¹⁷	% coverage land area
1	Forests			
1.1	Natural forest	1,537,459	1,535,902	1.7
1.2	Mangrove forest	122,618	122,494	0.1
1.3	Plantation forest	147,570	147,421	0.2
	Subtotal	1,807,647	1,805,817	2.0
2	Woodlands			
2.1	Open woodland	21,344,829	21,323,218	24.1
2.2	Closed woodland	10,681,314	10,670,499	12.1
	Subtotal	32,026,143	31,993,717	36.2
3	Bushland & Thicket			
3.1	Bushland	12,335,164	12,322,675	14.0
3.2	Thickets	456,563	456,101	0.5
	Subtotal	12,791,727	12,778,776	14.5
4	Cultivated land			
4.1	Cultivated bushland	5,650,091	5,644,370	6.4
4.2	Cultivated woodland	5,986,785	5,980,723	6.8
4.3	Grains and other crops	17,938,105	17,919,943	20.3
4.4	Wooded crops	2,520,518	2,517,966	2.9
	Subtotal	32,095,499	32,063,003	36.3
5	Grassland	6,044,225	6,038,105	6.8
6	Wetland	3,165,359	3,162,154	3.6
7	Built up areas	224,879	224,651	0.3
8	Open land	266,787	266,517	0.3
9	Ice	1,562	1,560	0.0
	Total land area	88,423,828	88,334,300	100.0



- Although Tanzania has been blessed with this valuable resource but it still diminishing each year due to various reasons, including:
 - i. Illegal logging
 - ii. Charcoal making
 - iii. Un-environmental farming practices
 - iv. Forest Fires
 - v. Establishment of new settlements *etc*

Illegal logging



Charcoal making



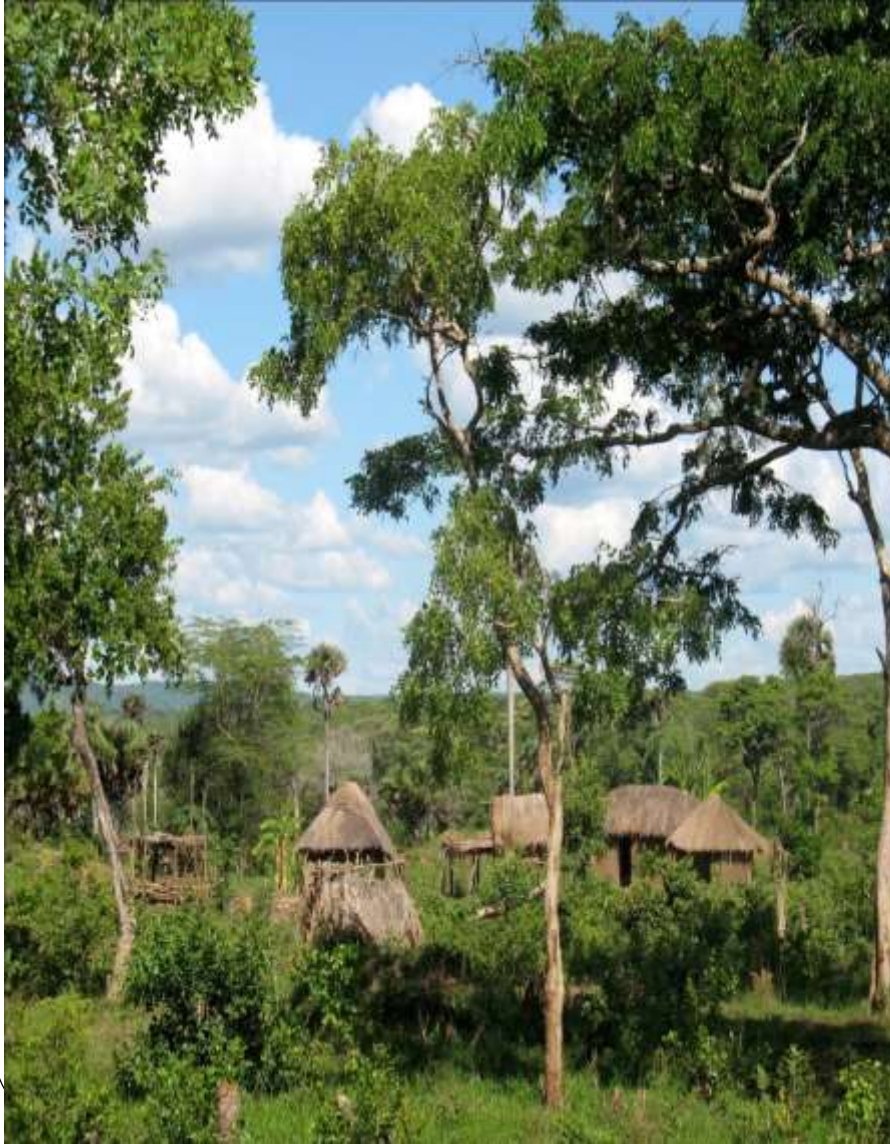
Un-environmental farming practices



Forest fire



Establishment of new settlement





- All these activities leads to forest cover loss which **needs to be assessed and monitored.**
- NAFORMA LULC results show that the rate of deforestation between 1995 and 2010 was 372,816 ha per year

Gap

- Since NAFORMA results to date, no forest cover loss assessment have been done to monitor the forest change

How can monitoring be achieved?

- Either by conducting field inventory *i.e.* re-measurement of permanent sample plots
- Or using remote sensing



Through the skills gained from this project;

- Resource assessment Unit were able to capitalize on what have been gained through the project to perform different GIS works using Open source software
- Through Advanced training, the exposure to GEE has made us to go further and tried to create the script for LULC mapping and now we are in progress of producing Tanzania LULC map of 2019 by using GEE
- The output will be used to update the forest information as well as monitor changes of forest cover.
- This will be a good start to develop our own NFIS

***The classes used in this activity are based on the classes used in the previous NAFORMA LULC map*

Google Earth Engine

Search places and datasets...

Scripts Docs Assets

Filter scripts **NEW**

Owner (1)
users/shanikiluvia/Shani
Datasets
LANDSAT_LC08_C...
CUSTOM_change_Ta...
GEE Practical Botsw...

LC2020_EditedScript * Get Link Save Run Reset Apps

```
Imports (14 entries)
var Shani_AOI: Table users/shanikiluvia/Shani_grid
var Montane: FeatureCollection (Error)
Invalid JSON:
var Mangrove: FeatureCollection (Error)
Invalid JSON:
var Plantation: FeatureCollection (Error)
Invalid JSON:
```

Inspector Console Tasks

Use print(...) to write to this console.

ImageCollection COPERNICUS/S2... JSON



Google Earth Engine

Search places and datasets...

Scripts Docs Assets

Filter scripts **NEW**

Owner (1)
users/shanikiluvia/Shani
Datasets
LANDSAT_LC08_C...
CUSTOM_change_Ta...
GEE Practical Botsw...

LC2020_EditedScript *

Get Link Save Run Reset Apps

- Imports (14 entries)
 - var Shani_AOI: Table users/shanikiluvia/Shani_grid
 - var Montane: FeatureCollection (Error)
Invalid JSON:
 - var Mangrove: FeatureCollection (Error)
Invalid JSON:
 - var Plantation: FeatureCollection (Error)
Invalid JSON:

Inspector Console Tasks

Use print(...) to write to this console.

ImageCollection_COPERNICUS/S2... JSON



Scripts Docs Assets

Filter scripts NEW

Owner (1)

- users/shanikiluvia/Shani
 - Datasets
 - LANDSAT_LC08_C...
 - CUSTOM_change_Ta...
 - GEE Practical Botsw...

```
LC2020_EditedScript
```

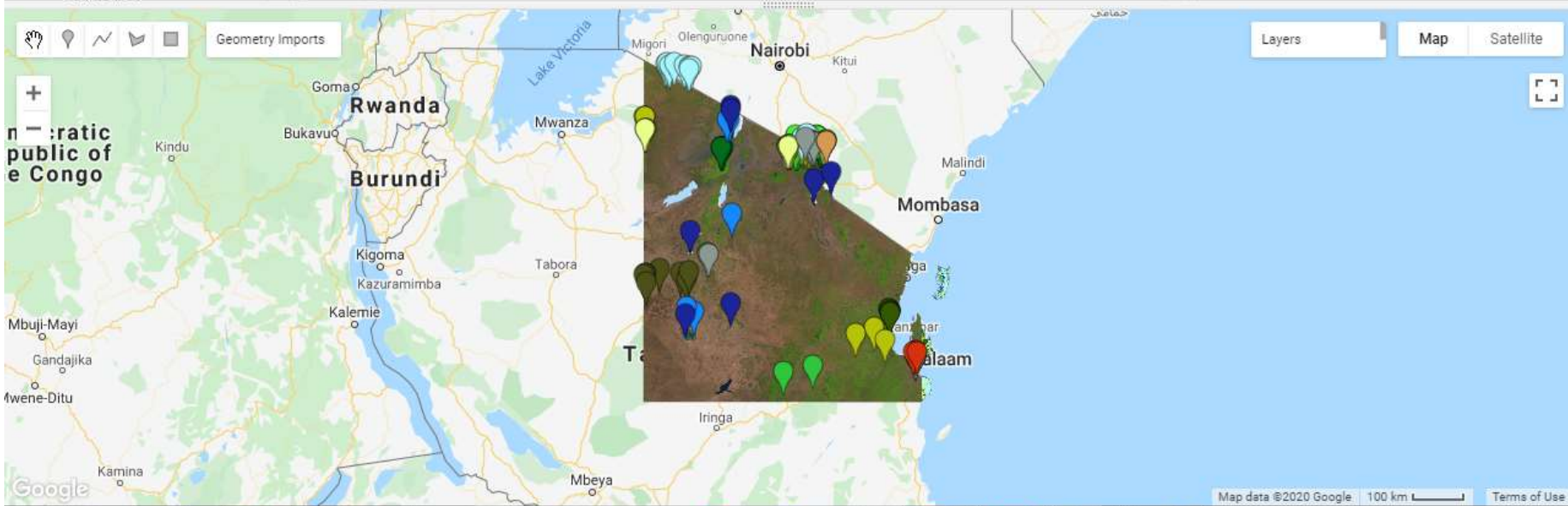
Imports (14 entries)

- var Shani_AOI: Table users/shanikiluvia/Shani_grid
- var Montane: FeatureCollection (9 elements)
- var Mangrove: FeatureCollection (9 elements)
- var Plantation: FeatureCollection (7 elements)
- var Thickets: FeatureCollection (8 elements)
- var Woodland: FeatureCollection (5 elements)
- var Bushland: FeatureCollection (19 elements)
- var Grassland: FeatureCollection (13 elements)

Inspector Console Tasks

Use print(...) to write to this console.

```
ImageCollection_COPERNICUS/S2... JSON
```



Windows taskbar with icons for File Explorer, Firefox, Chrome, and other applications.

Scripts Docs Assets

Filter scripts NEW

Owner (1)

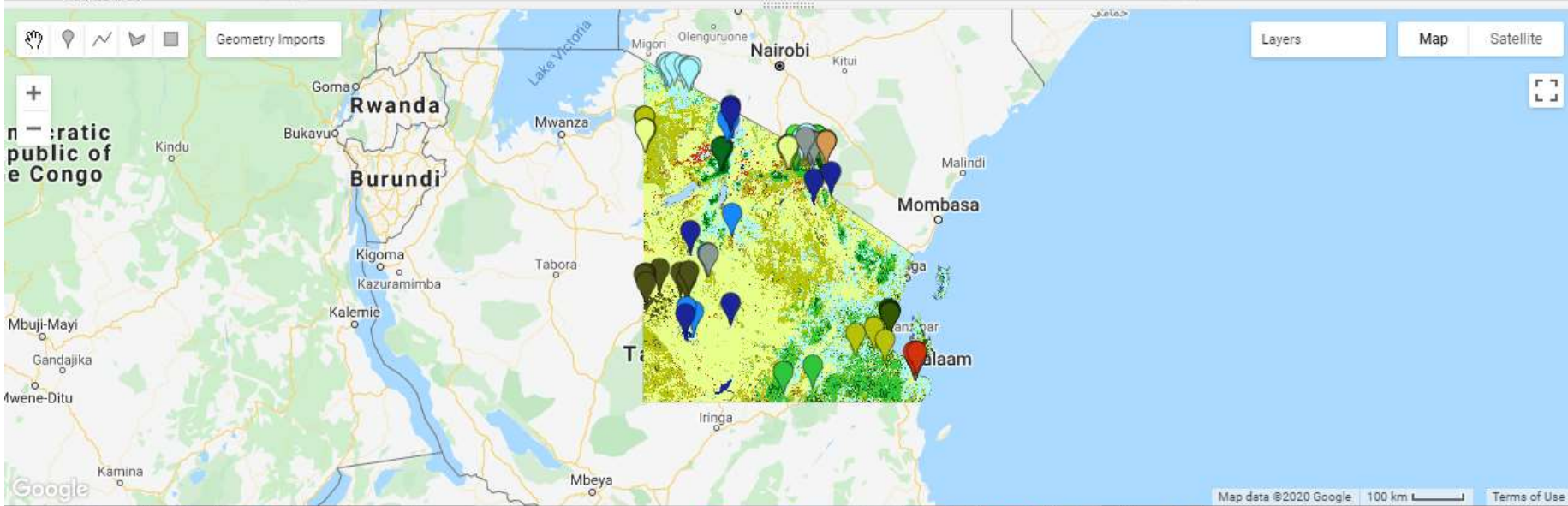
- users/shanikiluvia/Shani
 - Datasets
 - LANDSAT_LC08_C...
 - CUSTOM_change_Ta...
 - GEE Practical Botsw...

```
LC2020_EditedScript *  
  features: List (19 elements)  
  var Grassland: FeatureCollection (13 elements)  
    type: FeatureCollection  
    columns: Object (2 properties)  
    features: List (13 elements)  
  var Cultivatedland: FeatureCollection (14 elements)  
    type: FeatureCollection  
    columns: Object (2 properties)
```

Inspector Console Tasks

Use print(...) to write to this console.

```
ImageCollection_COPERNICUS/S2... JSON
```





Layer Order

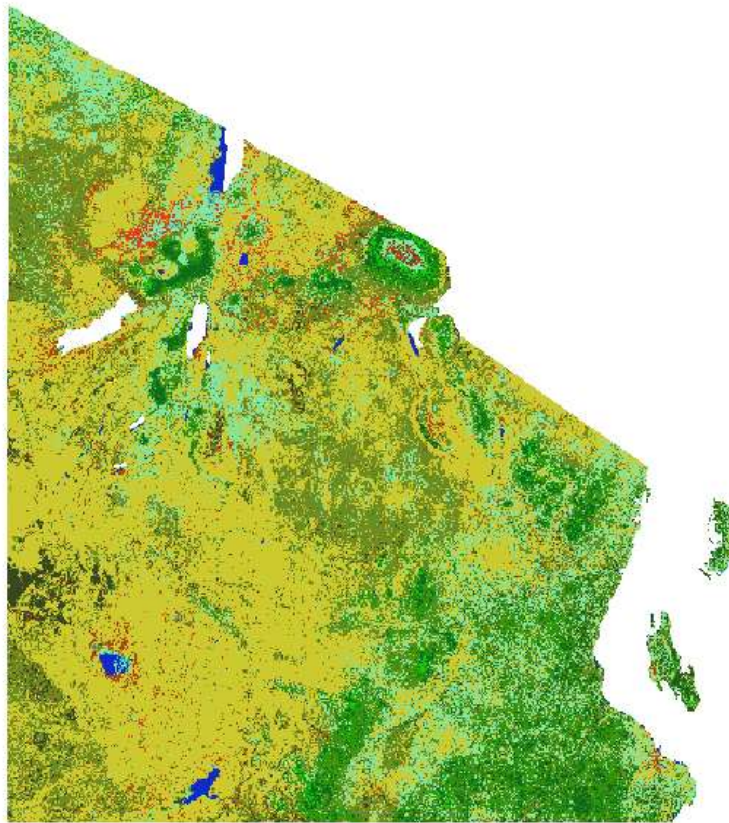
- clip1
- Sentinel2_Composite

Control rendering order

Layer Order

Layers

- clip1
- Sentinel2 Composite
 - 1
 - 2
 - 3
 - 4
 - 5
 - 6
 - 7
 - 8
 - 9



Layer Styling

Sentinel2_Composite

Paletted/Unique values

Band Band 1: classification (Gra)

Color ramp Random colors

Value	Color	Label
1		1
2		2
3		3
4		4
5		5
6		6
7		7
8		8
9		9

Layer Rendering

Blending mode Normal

Brightness

Live update

Type to locate (Ctrl+K)

1 legend entries removed.

Coordinate 3676782,-598460

Scale 1:4610552

Magnifier 100%

Rotation 0.0°

Render EPSG:4326





Future Plans:

- To establish NFIS based on the classes used in SADC RFIS
- *This will be achieved by the help of the provided NFIS operating manual , seeking for technical help from Mr. Than/ Mr Mai while keeping on practicing the customization of RFIS*
- To develop FIS of National forest reserves.
- *I suggested this activity to be included in the next financial year as the and we are still waiting for the final decision.*



Challenges

- As FIS-EWG were assigned to prepare training schedule for our fellow staff back home. For some of us this activity was difficult to achieve as it was not budgeted in institutional normal activities and it really needed resource allocation so as to reach other staff.



Forest Fire Monitoring present Status

Through the skills gained from this project

- Resource assessment Unit is now able to detect and report any fire occurrence as early as possible
- Resource assessment Unit in collaboration with Publicity and Extension Unit were able to reach about 600 people and train them on the following:
 - Fire Prevention
 - Fire Protection
 - Fire suppression;
 - Fire fighting;



- Use of SADC Collect software on fire monitoring and survey;
- GIS and Remote sensing on fire management; and
- Online fire Detection.

FIRE SUPPRESSION PRACTICE



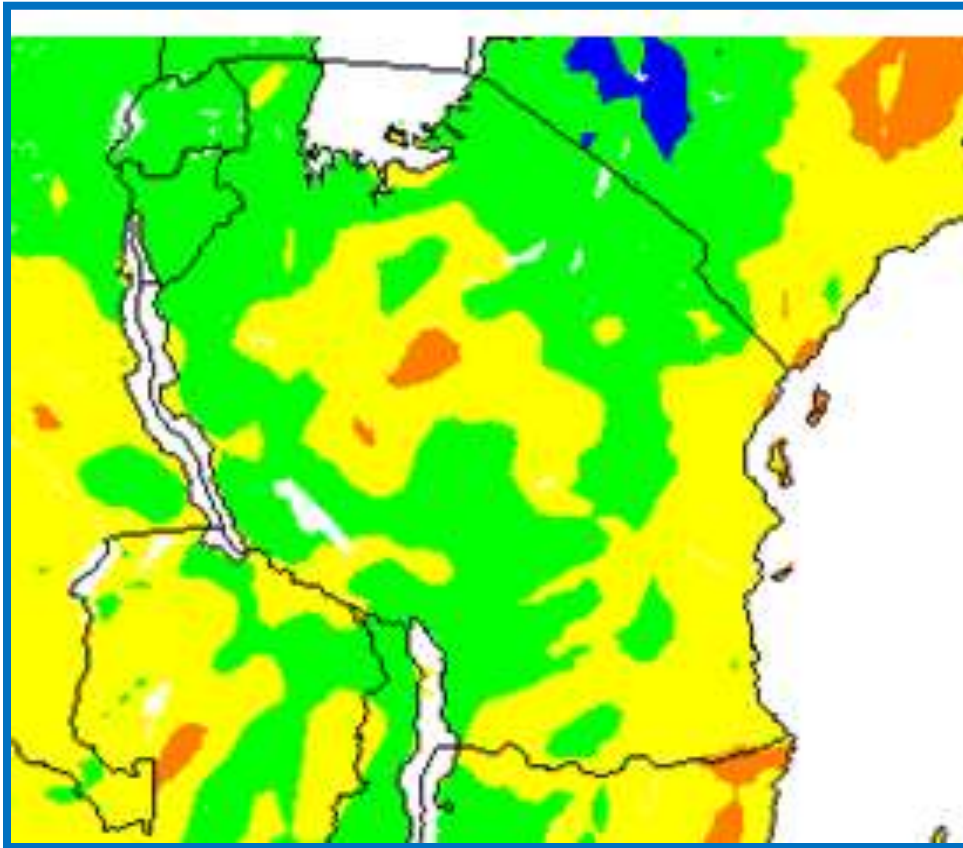
HOW TO CHECK WIND DIRECTION



PREPARATION OF AREA AND EQUIPMENT BEFORE STARTING FIRE



FIRE DANGER INDEX(FDI)



Legend:

- Low
- Moderate
- Dangerous
- Very dangerous
- Extremely dangerous

FIRE FIGHTING DESCRIPTIVE VIDEO



VID-20190911-WA0025.mp4

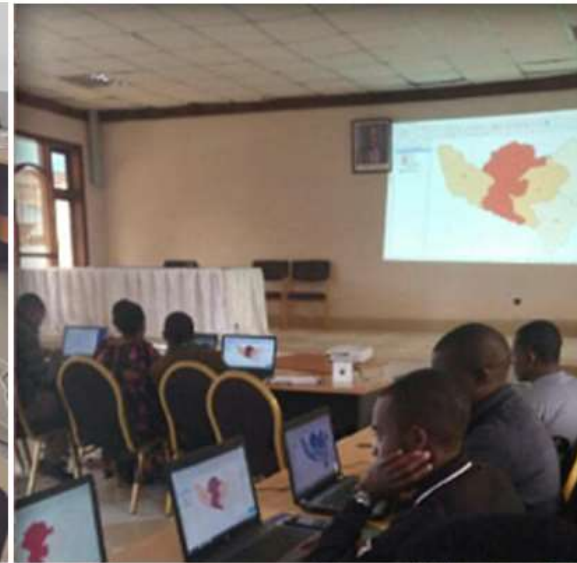
FOREST FIRE AWARENESS DURING EXHIBITION



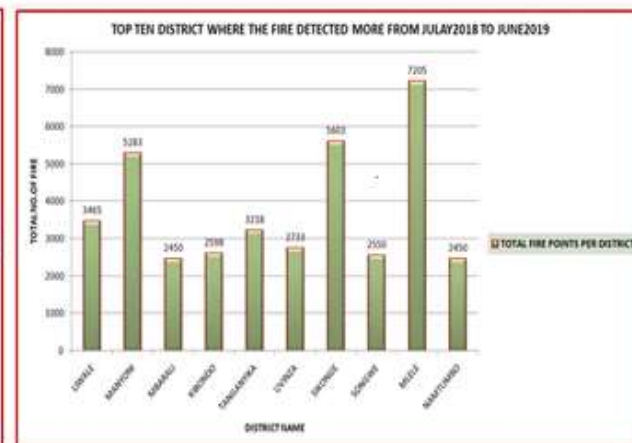
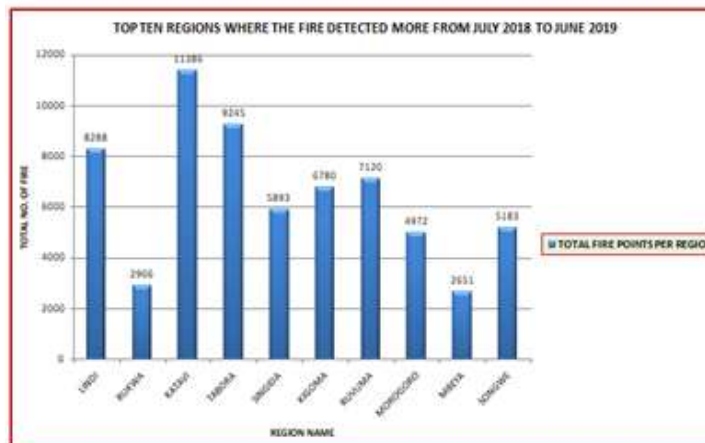
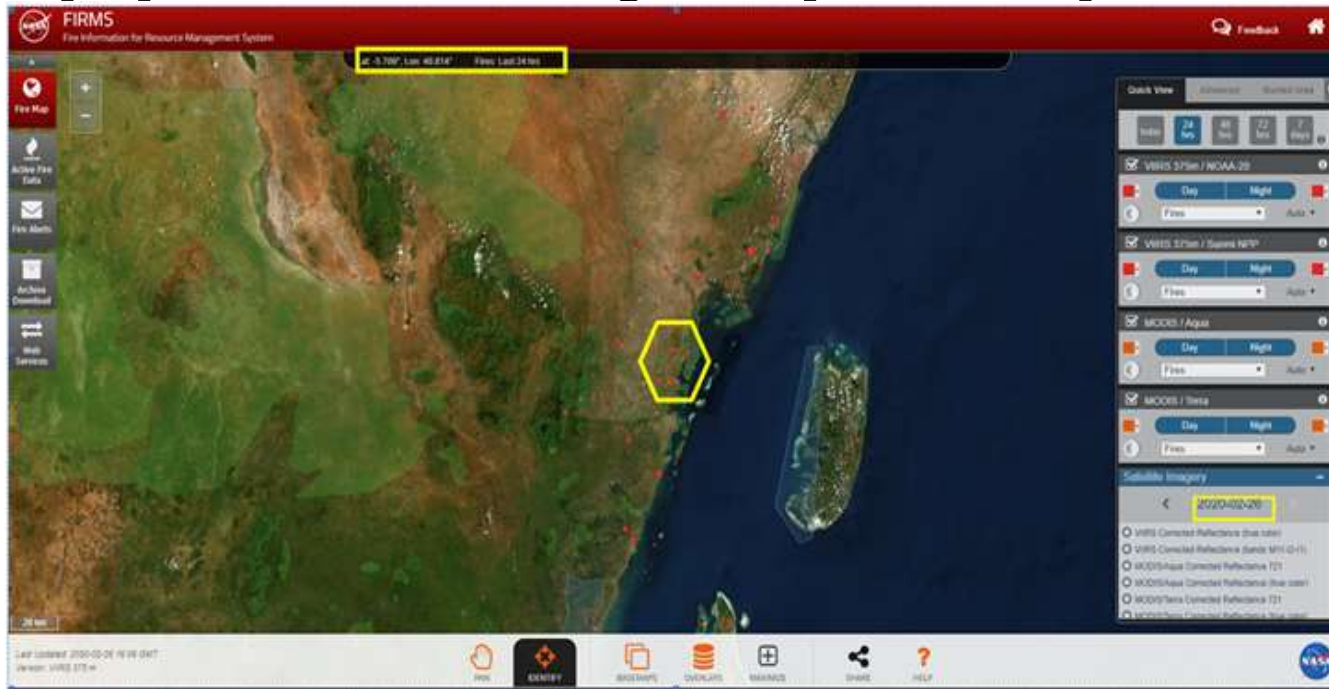
AWARENESS TRAINING WORKSHOP ON FOREST FIRE MANAGEMENT



GIS AND REMOTE SENSING TRAINING FOR FIELD STAFF



Training on firms data download of latest fire hotspots and Historical Fire data for the preparation of fire management plans and reports



TRAINING ON USE SADC COLLECT ON FIRE MONITORING AND SURVEY





- Through the efforts made by these two units on Forest Fire Management Awareness programs, TFS Management purchased one fire track for one of the Government's biggest plantation in order to support fire fighting

FIRE TRUCK

TUMEDHAMILIA KUDHIBITI MADHARA
YATOKANAYO NA MOTO KATIKA MISITU



Hili ni gari la zimamoto lililowasili February 2020



Future Plans:

The following activities will continue to be implemented by in the field by involving the field staff and communities surrounding the protected areas:

- Awareness on Forest Fire Suppression and fire fighting,
- Fire prevention
- Fire protection
- Fire suppression;
- Use of SADC Collection software on fire monitoring and survey;
- GIS & Remote sensing on fire management and Online fire Detection; and
- Use of Fire Danger Index for early warning.

ASANTE



THANK
YOU



KARIBUTANZANIA

